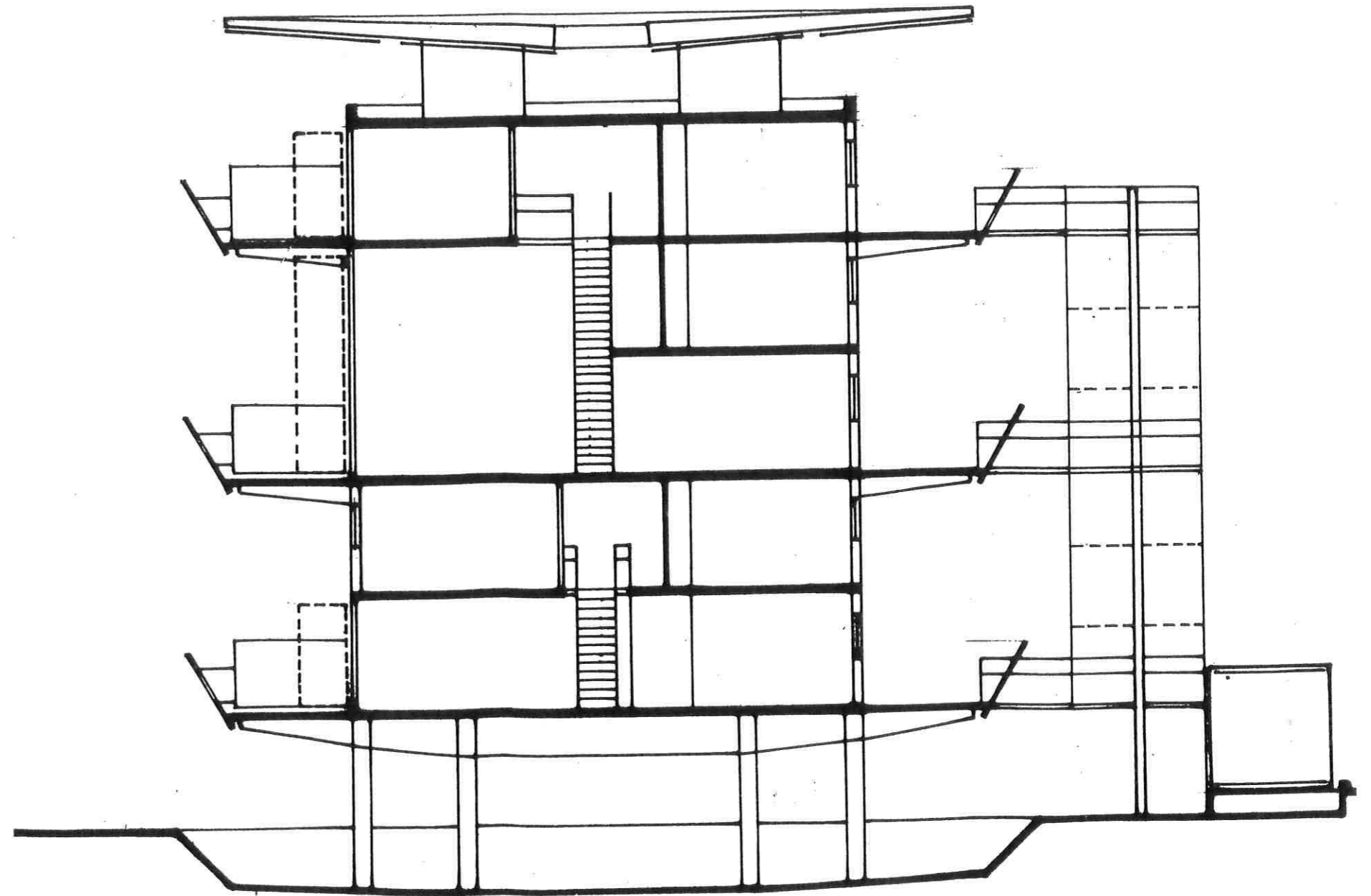
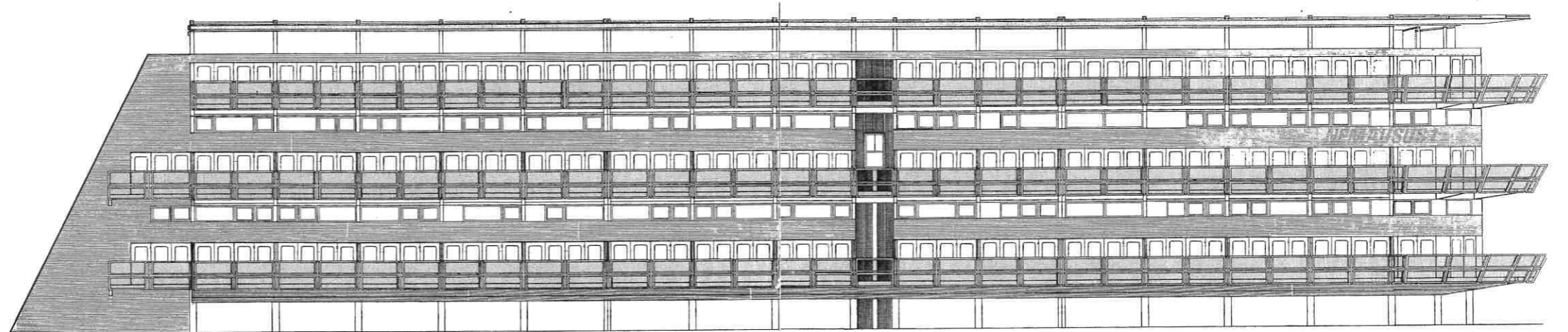
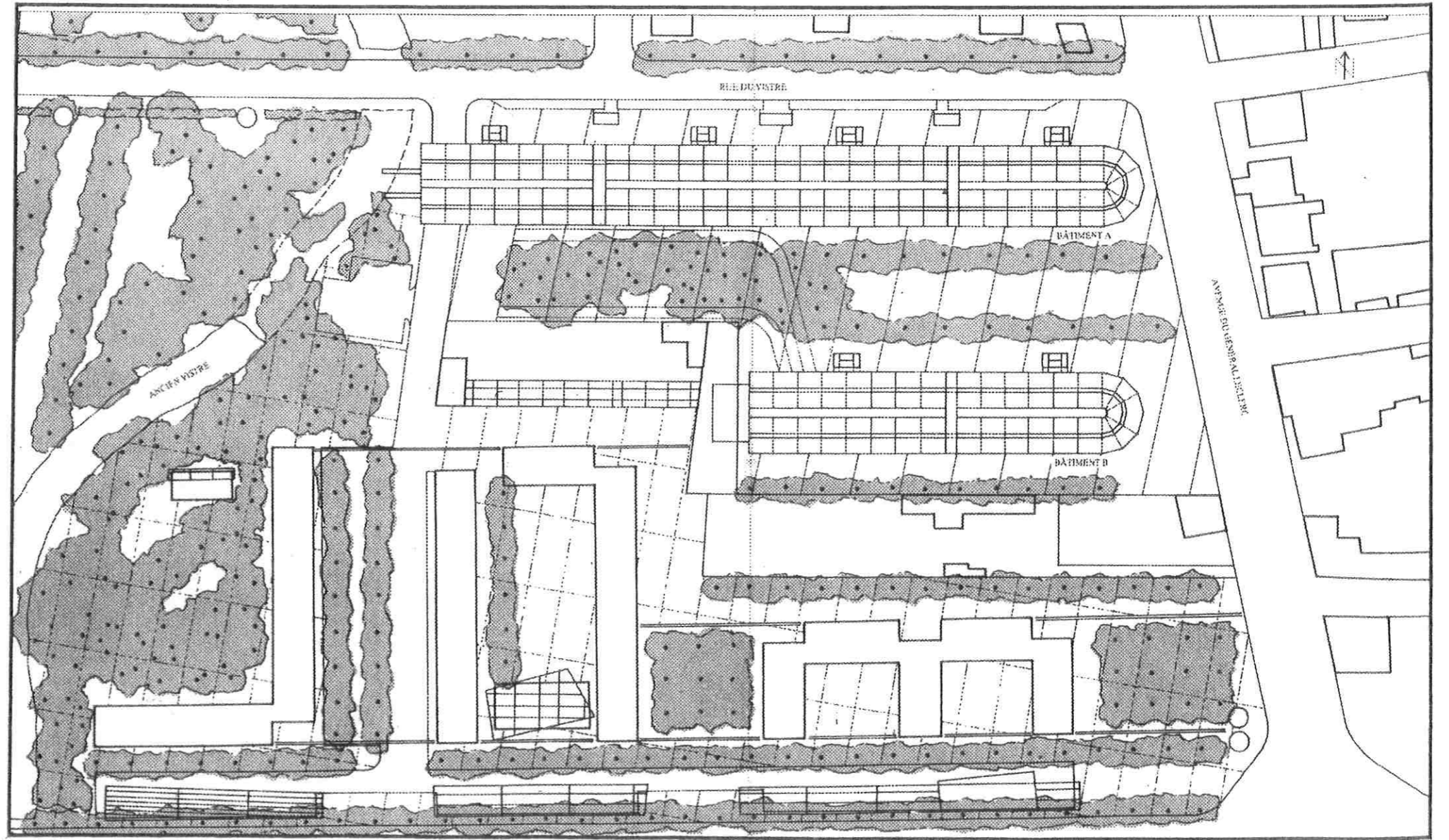


Cinq pièces  
duplex de proue, de  
170 m<sup>2</sup>, avec sa passerelle. 5 mmpm.

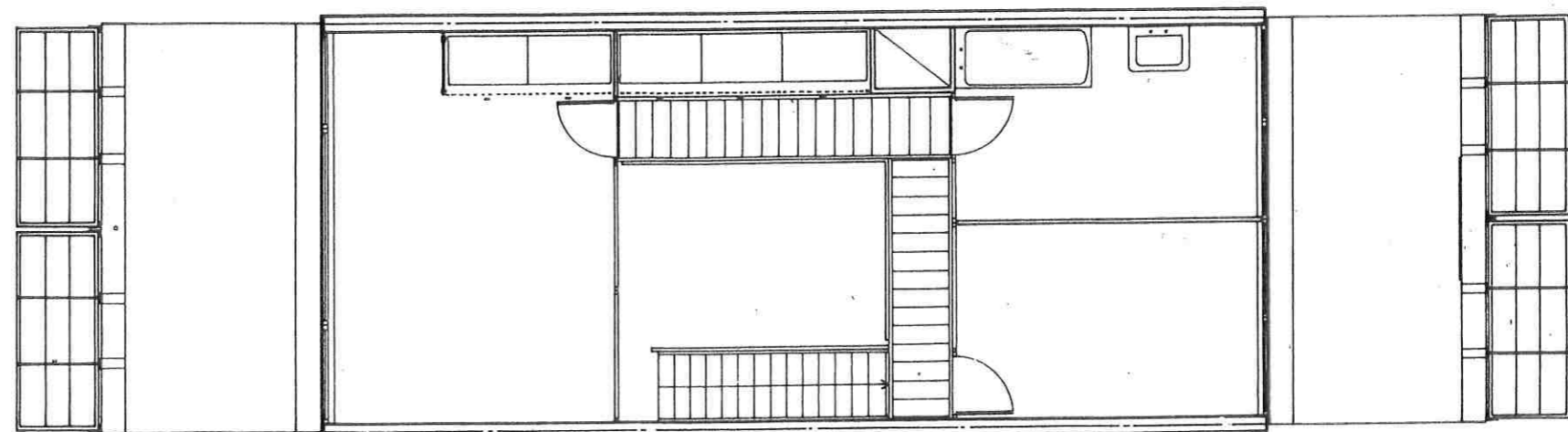
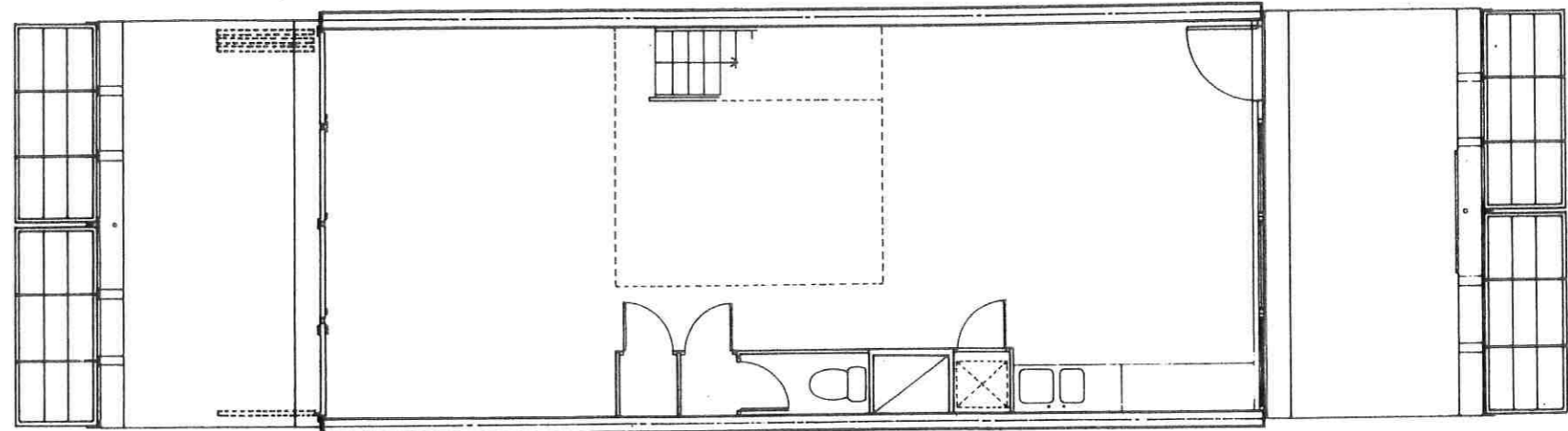
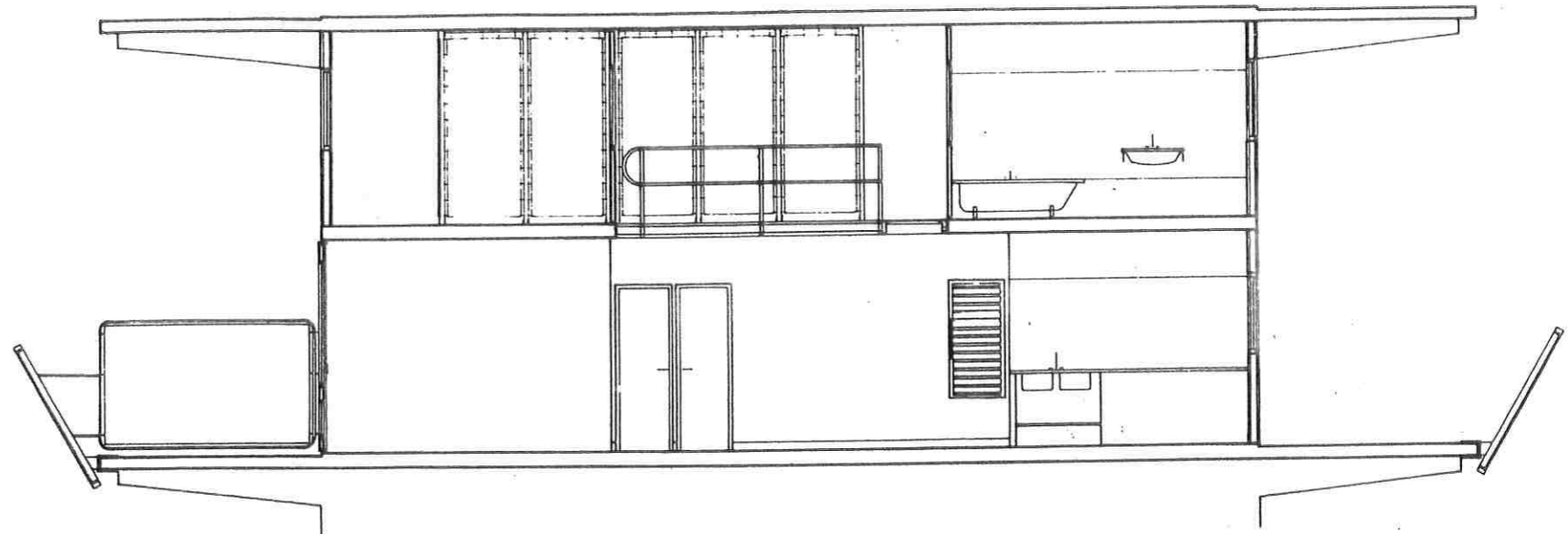
DD n° 252  
sept. 87



Coupe transversale. Noter les duplex et triplex, la desserte par coursive, face nord, les terrasses privées au sud et les parkings sous pilotis.

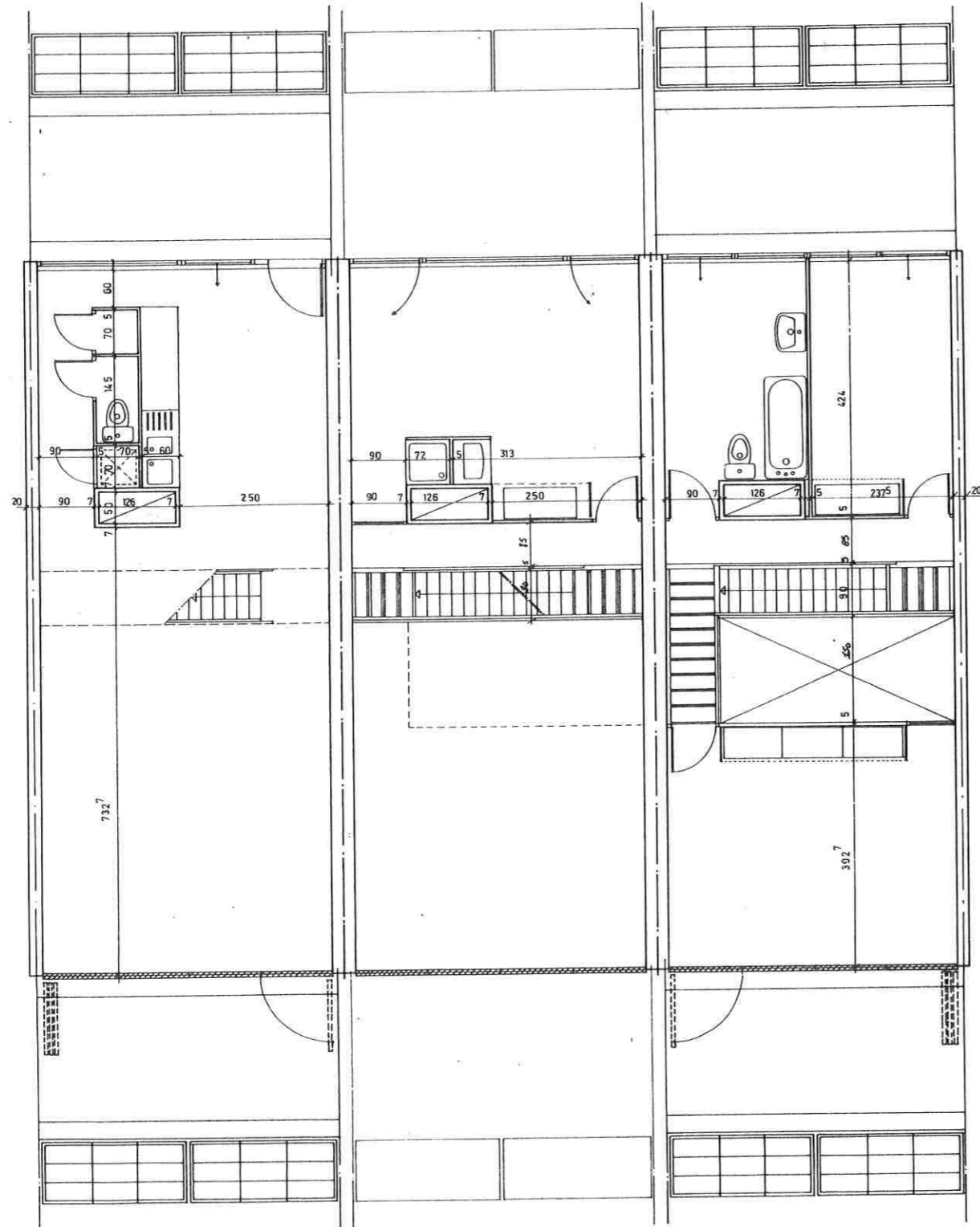


AA n° 252  
sept. 87

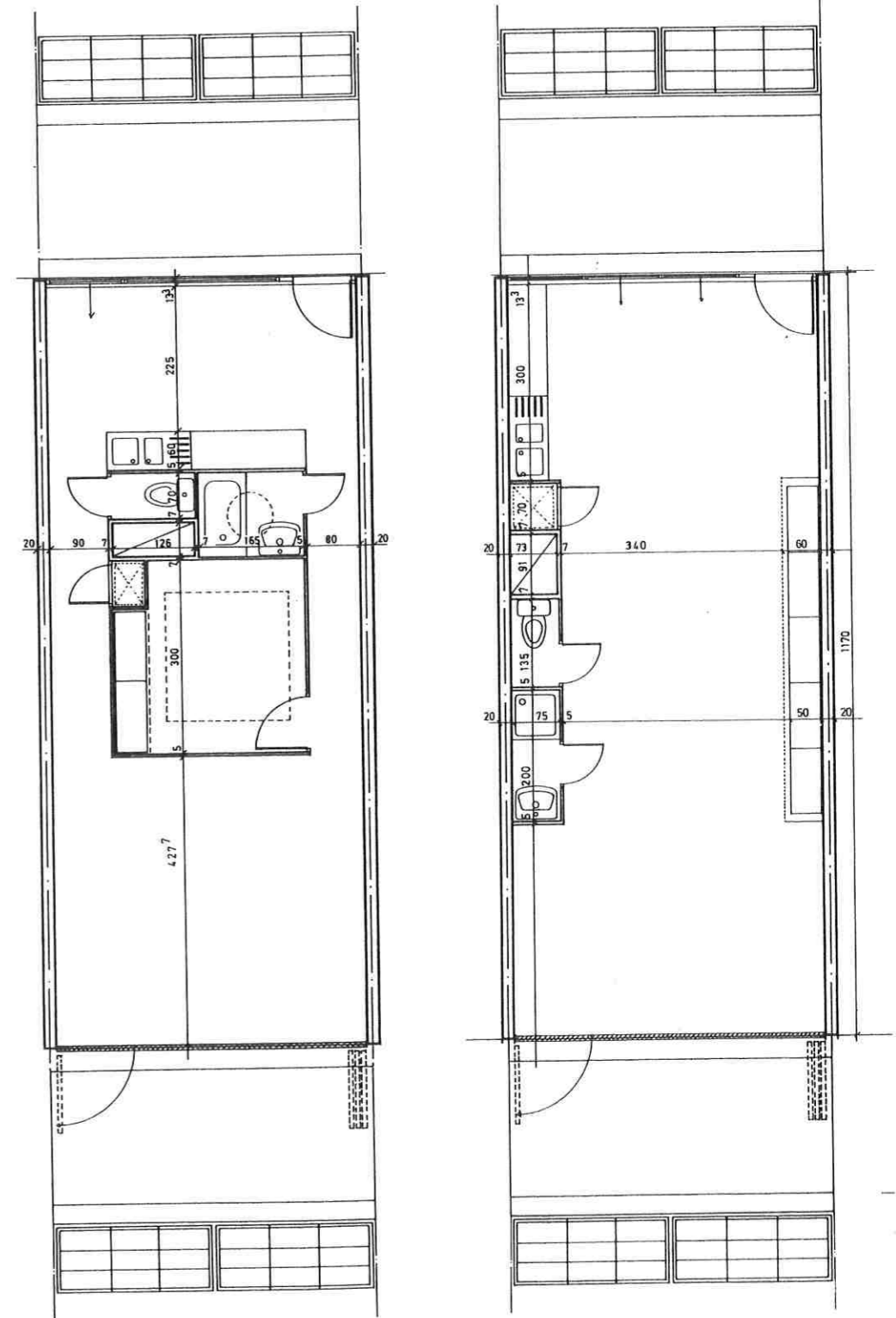


Trois pièces duplex type  
de 94 m<sup>2</sup>. 5 mmpm.

11 n°252  
sept. 87



Quatre pièces  
triplex de 116 m<sup>2</sup>. 5 mmpm.



Deux deux pièces  
simplex de 52 m<sup>2</sup>. 5 mmpm.

Al n° 252  
sept. 87